

# Portable Electric scooter

## USER MANUAL

Thank you for purchasing our products

Please carefully read the user manual  
And warranty book before using



# CATALOGUE

<b>MAIN PARTS</b>	<b>3</b>
<b>SAFETY</b>	<b>4</b>
<b>PRODUCTS / FOLDING STAGE</b>	<b>5</b>
Folding stages	5
Folding steps	6
Unfolding steps	7
<b>OPERATION</b>	<b>8</b>
Introduction of Handlebar parts	8
Operation Instruction	8
Display Factory settings	10
<b>RIDING OPERATION</b>	<b>11</b>
Ready	11
Start	11
Brake	11
<b>BATTERY AND CHARGER</b>	<b>12</b>
Battery	12

Charger	12
Charge Description	12
<b>MAINTENANCE</b>	<b>13</b>
Lubricating	13
Battery	13
Placement and daily care	13
<b>GENERAL TROUBLESHOOTING</b>	<b>14</b>
<b>PRODUCT SPECIFICATION SHEET</b>	<b>15</b>
<b>QUALITY ASSURANCE</b>	<b>16</b>

change description

## **MAIN PARTS**



## **SAFETY**

1. The product is for adults only, limited for one adult, please do not carry two adults at the same time. Is not suitable for minors.

2. Please wear your safety helmet and other protective equipment when riding.
3. Do not ride in traffic lane or unsafe roads and do not break local regulations
4. Please exercise in wide areas, and ride after skilled manipulation, do not ride in traffic lane.
5. Do not make any dangerous actions when riding or riding with one hand. Keep your feet on the scooter.
6. Do not attempt to ride the scooter on stairs that are above 3 cm; it may overturn the scooter causing injury or damage. Please try to avoid also the stairs smaller than 3 cm. It also may cause injury or damage.
7. The scooter's highest speed is 30 Km/h. For your safety, please limit the speed within 20 Km/h. Please try to avoid using it at night, if needed, please limit the speed within 15 K/h or less and turn on headlight.
8. Do not use scooter when the temperature is lower than -5 °C.
9. Please slow down or get off when riding in rough or poor road conditions.
10. Do not ride the scooter in oily or icy surface terrain.
11. Please adjust the height of handlebar according to your height or to ensure a safety riding.
12. Do not immerse the scooter in the water with the depth of 4 cm or spray it directly with water to avoid damage of the electrical parts of the vehicle.
13. Please try to avoid riding in bad weather such as heavy rain and high winds to protect it.

## **PRODUCTS**

## Folding stages



A – unfolded



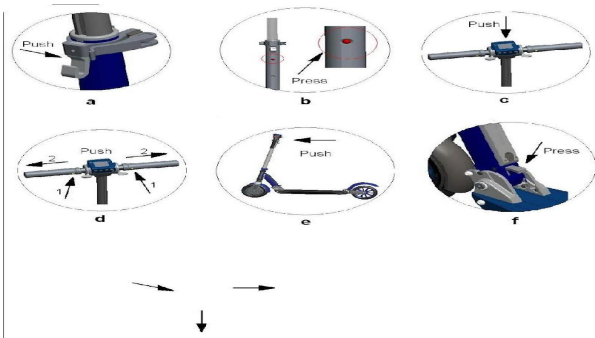
B - folding handlebars



C - fully folded

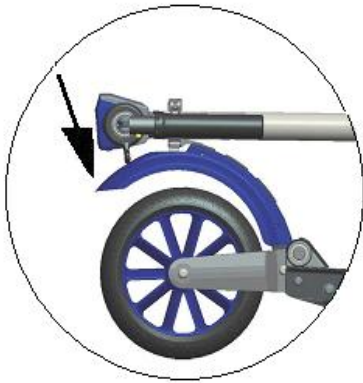
## Folding steps

1. Open the **lock lever**, in the direction of arrow, as shown in figure (a).
2. Press the **red button**, figure (b), at the same time press down **handlebars** as shown in figure (c) and push the **lock lever** to the lock position.
3. Hold the handlebar with both hands, **push buttons** (1) shown in Figure (d). Pull out the **handlebar grips**, figure d, up to a maximum and fold downwards to reach that figure B, from previous page.
4. Push the handlebar forward, press **folding lever** in the direction of the arrow in the figure (f)
5. Continue folding scooter until **folding hook** reaches and hangs the bolt located on the rear brake

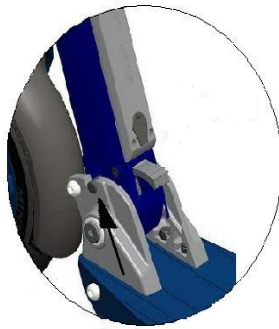


## Unfolding steps

1. Press the **rear brake** in the direction of the arrow in the figure (a) until **folding hook** releases the bolt located on the rear brake. Then, lift the handlebar until it reaches the working position and the locking bolt comes into place, like in figure (b).
2. Raise the two handles of the handlebar until they automatically return to the work position, figure (c)
3. Push the lock lever in the direction of the arrow in Figure (d) and lift handlebars to desired height. Now press button shown in Figure (e) and fix it in one of the two holes, as desired.



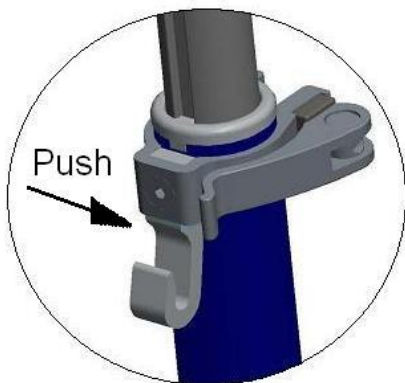
**a**



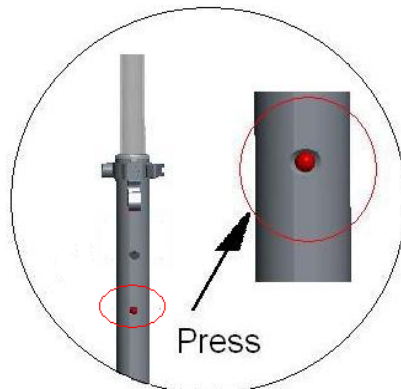
**b**



**c**



**d**



**e**



# OPERATION

## 1. Introduction of Handlebar parts



1. Thumb Accelerator
2. Thumb Electronic Magnetic Brake
3. Horn Button
4. Setting Button
5. Switch Button
6. Light Button
7. Lcd Display
8. Speed level

## 2. Operating Instructions

### a. ON/OFF

Press the switch for 1 sec, and the display lights indicate power on. Press for 3 seconds if you want to turn it off. It will turn off after unused for 3 minutes.

### b. Speed control

Press the right thumb accelerator to control the speed (1-30km/h). There are three speed level and press the Speed level button to change.

### c. Braking Control

Press the left thumb electronic magnetic brake. The greater angle you press, the greater braking force will be.

### d. Horn

Turn on the power, press the horn button and it will hoot.

### e. LED Headlight

Press the Light button when need and there will be a sign in display indicates the light is turn on. Press the button again when you do not need the light

### f. Mileage Show

When power on, It displays three modes: total, trip and time. You can press the settings button to change it.

When it displays the 'trip' mode, press the setting button for 3 seconds and it will clear the trip. ( Single stroke accumulated more than 100 belongs to 100)

### g. Emergency

Emergency, stamp the rear foot brake can simultaneously achieve front electronic magnetic brake and rear wheel friction brake; under normal circumstances, please do not use the emergency brake at high speed to avoid the wheel damage and the company shall not be responsible for this damage. Please repair it for pay.

### 3. Display Factory Setting

There are 5 buttons.They are Horn button(K5),Setting button(K4),Switch button(K3),Light button(K2),Speed Level(K1).

Press the k5 and k4 for 3sec to enter parameter table.

a.k5 button: Short according to return to the running state, the modification is not effective

b.k4 button: Short press to the next parameter;Grow by more than 2 seconds, save the changes made, and return the running state.

c.k3 button:Not effective

d.k2 button: Short press, reverse adjust parameter.

e.k1 button: Short press, adjust parameter

Parameter table

	Default	Min	Max	Description
0	1.0			Instrument version
1	0	0	1	starting mode, 0 = zero, 1 = non-zero start,
2	25	0	60	Km/h speed limit value, unit, 0 means no speed limit, the default of 25 km/h
3	12.0	4.0	40.0	The wheel diameter, the unit inches and 12 inches by default
4	1	1	100	Speed measuring magnetic steel, 1 by default
5	60	30	100	Not effective
6	80	30	100	Not effective
7	100	30	100	Not effective
8	0	0	255	Not effective
9	0	0	255	Not effective
10	0	0	255	Not effective
11	0	0	255	Not effective
20	90	0	600	Automatic shutdown time, unit of seconds, the default 90 seconds
22	1	0	1	If EBS brake hall, 0 = don't answer, 1 = EBS brake hall, 1 by default
99	0	0	999	ODO data reset, when data is equal to the XXX (1) set up and confirm after reset ODO data

# RIDING OPERATION

## Ready

1. Choose a suitable venue for riding.
2. Expand the scooter in accordance with the description.
3. Adjust the T-pipe to the suitable height according to your height.

## Start

1. Press the power button to turn on the power
2. Stand on foot on the scooter and leave another foot on the ground.
3. Gently press down on the right thumb accelerator, the scooter will immediately move forward slowly. Place the foot which is on the floor on the pedal after smooth riding. Press the right thumb accelerator, the greater the angle you press, the faster it will be.

## Brake

1. Under normal circumstances, pressing the left thumb electronic magnetic brake, the scooter will immediately de-energized and then brake. The greater the angle you press, the greater the braking force will be.
2. Emergency, stamp the rear foot brake can simultaneously achieve electronic magnetic front brake and rear wheel friction brake; under normal circumstances, please do not use the emergency brake at high speed.

# **BATTERY AND CHARGER**

Each KUGOO electric scooter was equipped with a special lithium battery and special smart charger, accessories carried by each scooter have a dedicated number, please do not use the charger of other brands, the charger is not appropriate to other company supplied charger, too. If the battery or charger is damaged owing to these, the company shall not be responsible.

## **Battery**

When you get the KUGOO electric scooter the first time, please charge the battery fully before using

The battery can be charged at any time, in order to ensure that the battery has power, during which the battery will not charge for any damage

Please charge the battery once every three months if stop using

Due to water, collision, and other non-normal factors that lead to battery damage, which is not covered under warranty.

## **Charger**

The company provides dedicated charger which has a charging protection function, when the battery is 100% charged, the charger will automatically stop charging Charging time is no more than 3 hours

Due to water, collision, and other non-normal factors that lead to battery damage, which is not covered under warranty.

## **Charge Description**

Open the charging hole rubber protective cover, put the charger connector into the charging hole

Connect the charger plug into the power socket

It means it is charging when charger light is red,; charger light turns green when the battery is fully charged.

## **MAINTENANCE**

### **Lubricating**

Please add a small amount of grease or lubricants to handle folded position every six months

Please check scooter every three months weather the screws are loose, if yes screw

### **Battery**

The lithium battery provide by company can be recharged at least 500 times, the normal use can reach more than 1,000 times. Every time after fully charged, the lithium battery needs to be replaced if the travel distance Is too short.

### **Placement and daily care**

Do not exposure the scooter under the sun for too long or other serious damp places Please keep the scooter clean

## GENERAL TROUBLESHOOTING

### Checklist

When the products have any problems, please refer to the following methods.

1. LED display black screen

Reason: Exposure under the sun for too long.

Solution: Place it in shadow and it will return to normal after a period.

2. Values appeared do not fit the actual values Reason: Parameters are set incorrectly or missing.

Solution: Please reset the display factory settings following the instructions

3. Digital display dim

Reason: Bad battery contacts or the battery is dead

Solution: Turn off the power then restart again, if the problem still occurs; please contact your local reseller.

When the product does not operate normally, check the following work is completed or not

- a. Turn on the battery
- b. Check the battery via the display if there is electricity,
- c. Left thumb electronic brake and rear brake in place,

- d. All jacks and connectors holes linked accurately.

If the above steps are completed, the product still does not operate normally; please contact your local vendor or reseller.

## **PRODUCT SPECIFICATION SHEET**

***Note:** Please follow the correct way to use our products, parts damages and other damages caused by abnormal use, the company shall not be responsible for.*

In warranty period, if the malfunction and damage caused by following causes are not within the scope of the quality assurance:

1. Do not did the proper maintenance and repair in accordance with the instruction manual.
2. Use the electronic scooter for other purposes such as performing super dangerous actions, resulted damage or functional failure.
3. Disassemble or use of any external factory components
4. Wrong uses, traffic accidents or accidental collision damage the body and the body parts.
5. Stickers insufficiency, water and parts numbers do not match
6. Ride in the non-normal roads cause damage or failure to use
7. Operating rental of improper use or non-licensed
8. Scourge or irresistible reason



